



The Sycamores | Lichfield | WS14 9ES

£850 PCM

 **Webbs**  
estate agents

## Summary

Webbs Estate Agents are pleased to present this newly decorated one bedroom mid terraced house to rent in the desirable Sycamores development. Located just a five minute drive from Lichfield town centre and close to Lichfield city train station.

In brief the property comprises of living room, kitchen. Upstairs a double bedroom and bathroom. Externally there is off road parking for one vehicle.

Early viewing is highly recommended.

## Key Features

## Rooms and Dimensions

### PROPERTY DETAILS

#### Living Room

15'0" x 8'10" (4.58 x 2.71)

#### Kitchen

9'7" x 5'1" (2.93 x 1.56)

#### Bedroom

15'1" x 10'10" (4.61 x 3.32)

#### Bathroom

4'10" x 8'4" (1.49 x 2.55)

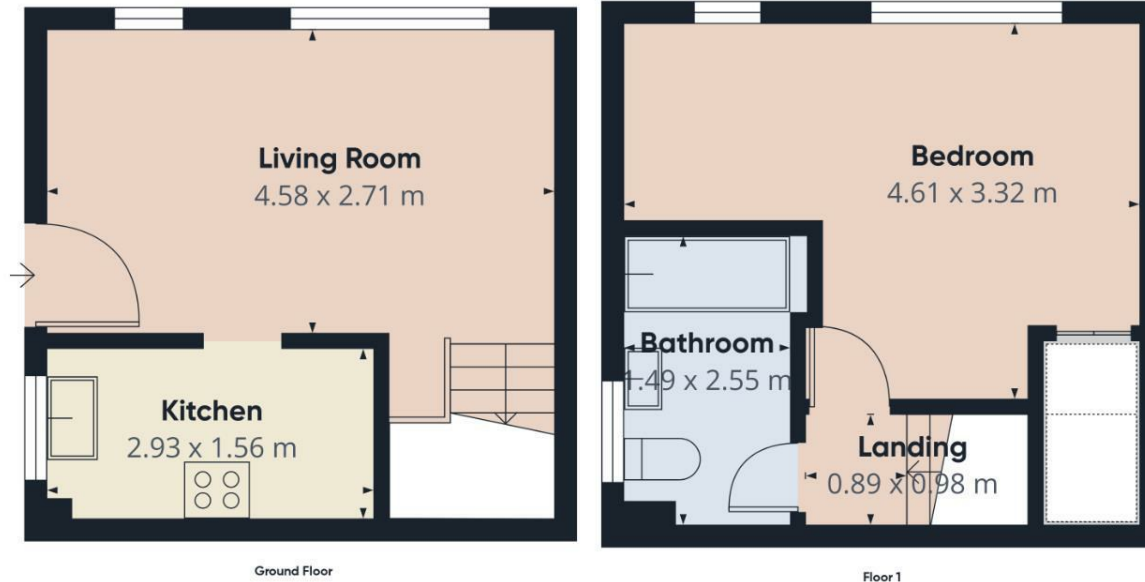
### TENANCY INFORMATION & IMPORTANT NOTES



**WON!**

PROPERTY AWARDS  
2025 - 2026  
★★★★★  
**GOLD WINNER**  
LETTING AGENT  
IN CANNOCK





Approximate total area<sup>(1)</sup>  
36.4 m<sup>2</sup>

(1) Excluding balconies and terraces

Calculations reference the RICS IPMS 3C standard. Measurements are approximate and not to scale. This floor plan is intended for illustration only.

GIRAFFE360



Webbs Estate Agents - endeavour to maintain accurate depictions of properties in Virtual Tours, Floor Plans and descriptions, however, these are intended only as a guide and purchasers must satisfy themselves by personal inspection.

Energy Efficiency Rating		Environmental Impact (CO <sub>2</sub> ) Rating	
Current	Potential	Current	Potential
78	78	78	78
<p>Energy Efficiency Rating: 78 (Green)</p> <p>Estimated energy costs: £100-150 per year</p>		<p>Environmental Impact (CO<sub>2</sub>) Rating: 78 (Green)</p> <p>Estimated CO<sub>2</sub> emissions: 100-150 tCO<sub>2</sub>e per year</p>	
<p>EU Directive 2002/91/EC</p>		<p>EU Directive 2002/91/EC</p>	